

*Our interior style reinforces the way in which we like to work; the office has become a light and airy open plan office emanating an inspiring atmosphere.*



## **PELGRIMSSTRAAT 3, ROTTERDAM, NL**

**CLIENT** Waternet, Amsterdam

**CONTACT** Mr R. Cochius

**PROJECT ADDRESS** Spaklerweg, A'dam

**FUNCTION** sewage pumping station

**TYPE** industrial building

**TASK** building commission

### **TASK DESCRIPTION**

preliminary design, final design,  
technical design and specification,  
aesthetical monitoring

**DIMENSIONS** 2460 m<sup>3</sup> and 450 m<sup>2</sup> gross  
floor space

**CONSTRUCTION COSTS** 1.250.000,- euro

**STATUS** completed

**START DESIGN** February 2002

**START CONSTRUCTION** November 2003

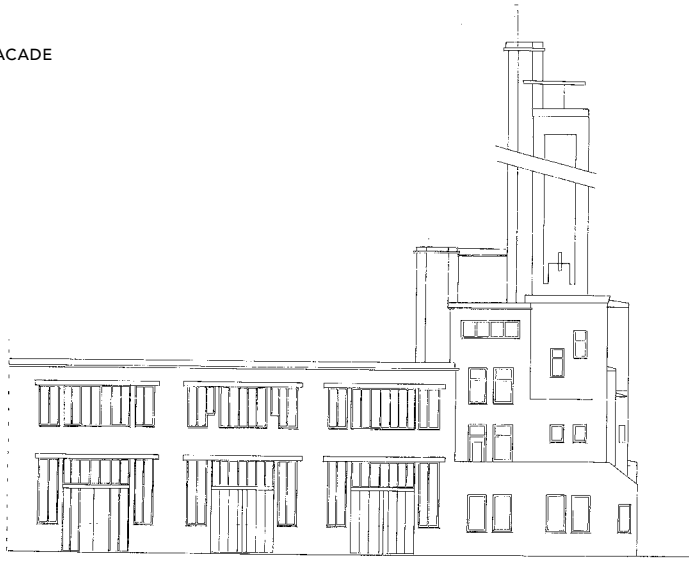
**FINAL ACCEPTANCE** February 2006

**AWARDS** winner Dutch Steel Award 2006

EXTERIOR WITH TOWER



FACADE



IMPRESSIONS OF THE INTERIOR



## CONCEPT

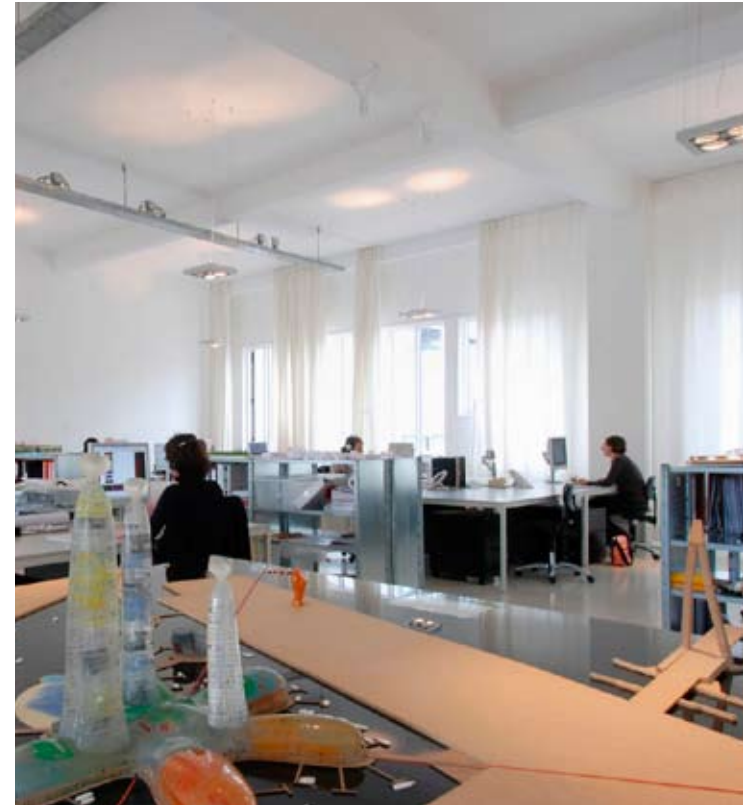
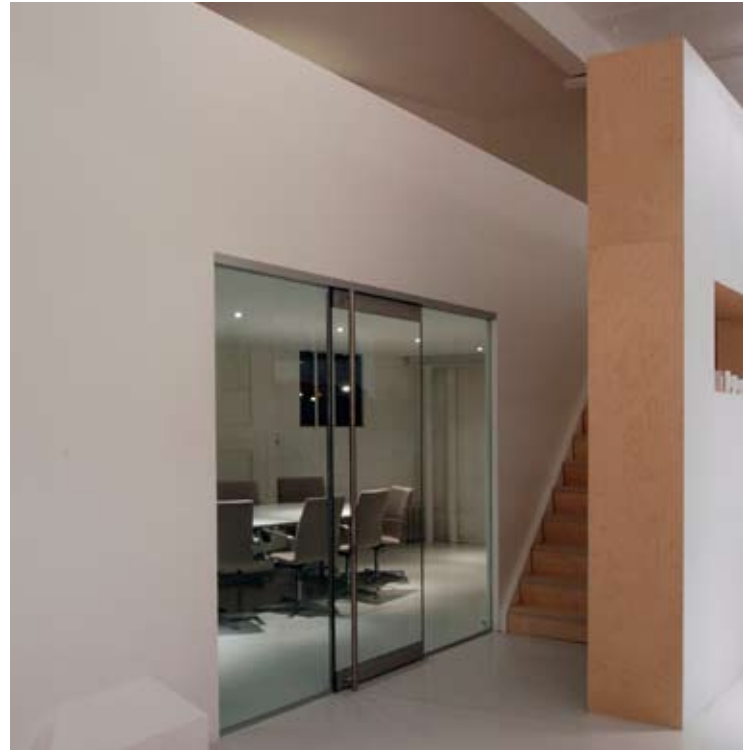
In 2006, after a thorough refurbishment, GROUP A moved into the new office on the Pelgrimsstaat 3 in Rotterdam. The Diepeveen building, now a national monument was the former premises of the ironware company Diepeveen built in 1929-1930 by architect W. Kromhout. The building consists of a warehouse section and a very narrow corner block that is the pedestal for the tower containing a dwelling and several offices. The tower with its spiral staircase had no other function than advertising the

company name to ships passing on the river and lying in harbours nearby. As a whole, it is a truly striking building on a remarkable location. The complete overhaul of the interior is exemplary of the 'hands-on' approach we hold so dear: we managed everything - from design straight through to the execution of the whole project. Our interior style reinforces the way in which we like to work; the office has become a light and airy open plan office emanating an inspiring atmosphere.

DETAIL ENTRANCE



IMPRESSION OF THE INTERIOR



## ADDITIONAL PROJECT INFORMATION



### TEAM

Maarten van Bremen, Jaap van Dijk  
Folkert van Hagen, Adam Visser, Jasper  
Hermans, Christina Murphy, Alejandro Noe

### PHOTOGRAPHY

DigiDaan, Amsterdam

### ADVISORS

construction: ABT, Delft  
installation: DWR Ingenieursbureau  
building management:  
DWR projectbureau A-4  
light: IBG Optics BV, Bleskensgraaf  
steel 'skin': Sorba Projects, Winterswijk

### MAIN CONTRACTOR

J.P. van Eesteren BV, Amsterdam

### SUBCONTRACTOR

machine construction: Aan der Stegge, Goor  
electrotechnical: GTI, Capelle a/d IJssel



**PELGRIMSSTRAAT 3, ROTTERDAM, NL**

PELGRIMSSTRAAT 3 3029 BH ROTTERDAM THE NETHERLANDS  
T +31 (0)10 244 01 93 F +31 (0)10 244 99 90  
E MAIL@GROUPA WWW.GROUPA.NL