

The jury praised the “inspirational use of steel” in the “complex, three-dimensional and detailed stainless steel casing of the booster station”.

[Jury report, Dutch National Steel Award 2006. Booster won the Design Award]



BOOSTER STATION SOUTH, AMSTERDAM

CLIENT Waternet, Amsterdam

CONTACT Mr R. Cochius

PROJECT ADDRESS Spaklerweg, A'dam

FUNCTION sewage pumping station

TYPE industrial building

TASK building commission

TASK DESCRIPTION

preliminary design, final design,
technical design and specification,
aesthetical monitoring

DIMENSIONS 2460 m³ and 450 m² gross
floor space

CONSTRUCTION COSTS 1.250.000,- euro

STATUS completed

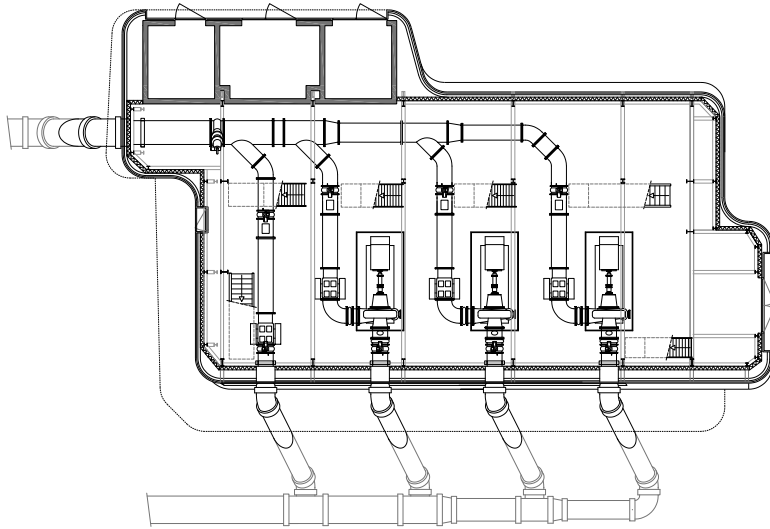
START DESIGN February 2002

START CONSTRUCTION November 2003

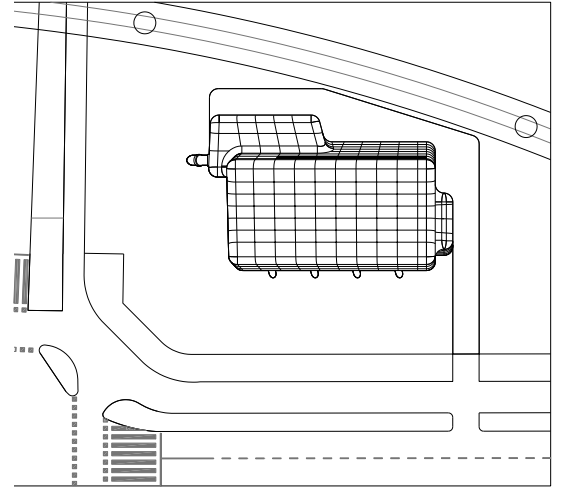
FINAL ACCEPTANCE February 2006

AWARDS winner Dutch Steel Award 2006

GROUND PLAN



SITUATION



FACADE IMPRESSIONS



CONCEPT

Booster Station-Zuid in Amsterdam is primarily a utility building which contains a technical plant, a pumping-engine for sluicing out sewage. The location in the public realm asks for a careful design, especially because Booster is located next to a busy traffic junction, where elevated metro lines, railways, roads and motorways intersect. The building can be seen as a metaphorical reference to a streamlined engine. The clinging, aerodynamic skin forms an envelope for the buildings technical program. It also emphasises the relation between



form and function the building reveals its ducts. The constant stream of passengers by car, metro, train or bicycle perceive the Booster Station as a futuristic sculpture. With its cladding of stainless steel panels it reflects the movements, shapes and colours of the environment. At night the illuminated seams in the steel skin make the building look like a mesh-model. Mass turns into mesh.

REFERENCE



DETAIL



FACADE



ADDITIONAL PROJECT INFORMATION



TEAM

Maarten van Bremen, Jaap van Dijk
Folkert van Hagen, Adam Visser, Jasper
Hermans, Christina Murphy, Alejandro Noe

PHOTOGRAPHY

DigiDaan, Amsterdam

ADVISORS

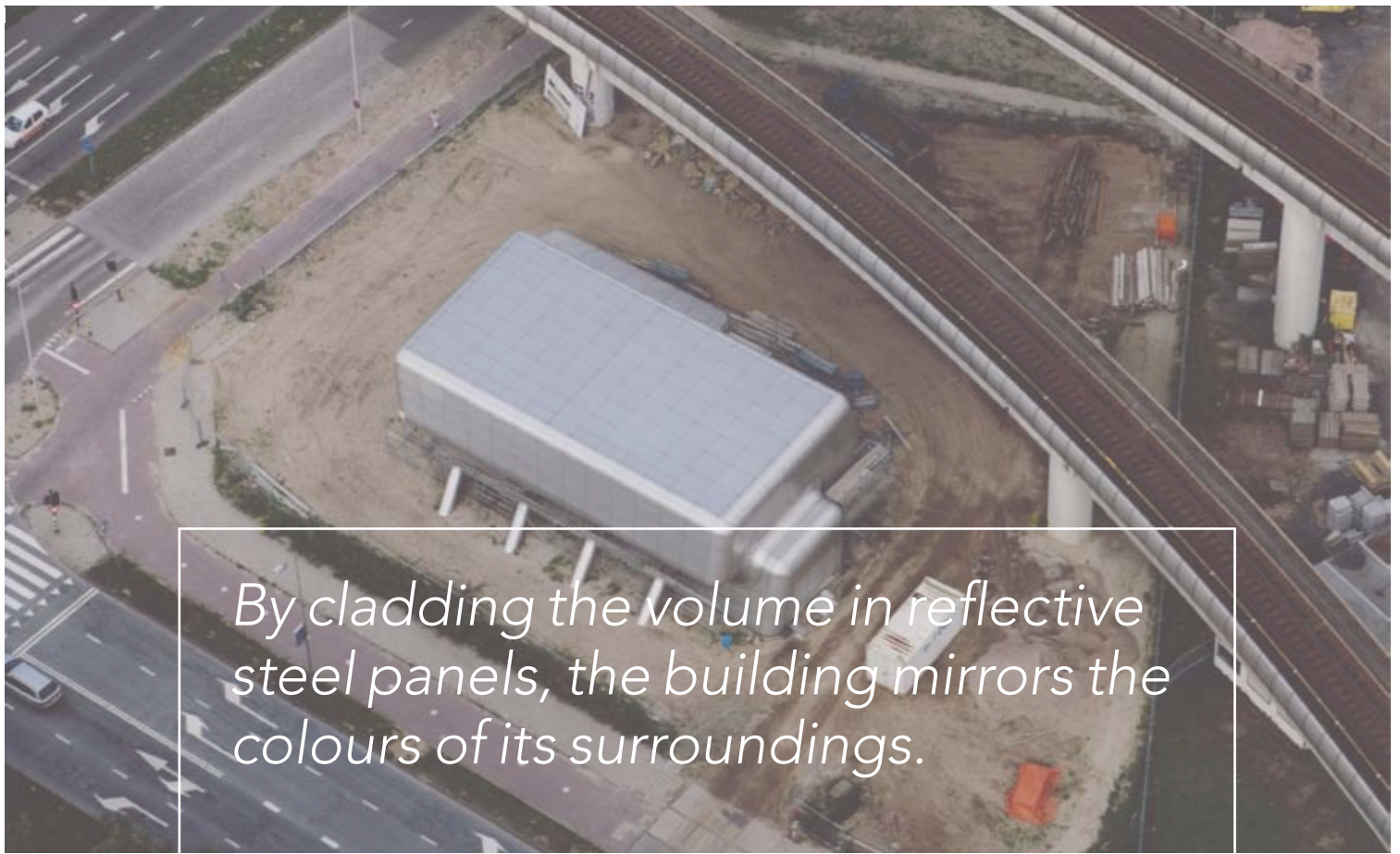
construction: ABT, Delft
installation: DWR Ingenieursbureau
building management:
DWR projectbureau A-4
light: IBG Optics BV, Bleskensgraaf
steel 'skin': Sorba Projects, Winterswijk

MAIN CONTRACTOR

J.P. van Eesteren BV, Amsterdam

SUBCONTRACTOR

machine construction: Aan der Stegge, Goor
electrotechnical: GTI, Capelle a/d IJssel



By cladding the volume in reflective steel panels, the building mirrors the colours of its surroundings.



At night, grid and seams are illuminated, thus enhancing the impression of a skin.

[concept, january 2002]

BOOSTER STATION SOUTH, AMSTERDAM

PELGRIMSSTRAAT 3 3029 BH ROTTERDAM THE NETHERLANDS
T +31 (0)10 244 01 93 F +31 (0)10 244 99 90
E MAIL@GROUPA.NL WWW.GROUPA.NL

